

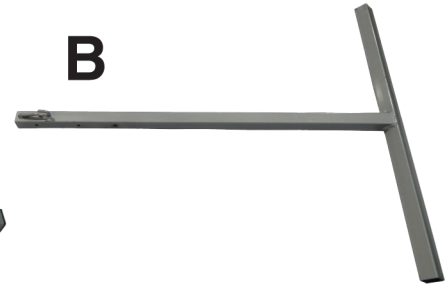
# 1604 - Champ Rolling Panel Stand

Made In USA



## Parts List

- A** 2 - Extension Bar
- B** 2 - Support Base
- C** 4 - Wheels (2 Locking)
- D** 4 - Nuts and Washers (For Wheels)
- E** 1 - Bolt; 3 - Washers; 1 - Nut  
(For Support Base)
- F** 1 - Chain
- G** 2 - Pins
- H** 4 - 1-1/2" Caps; 4 - 1" Caps
- I** 2 - Foam Pads



### WARNING

Read all assembly instructions completely before attempting to assemble unit. Improper assembly could result in damage to unit or injury to user.

1.



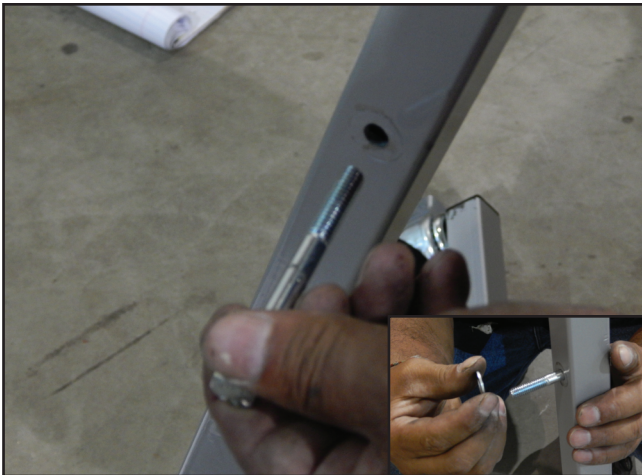
Insert wheel into the support base. Place the washer and nut onto the wheel bolt. Tighten the nut. Repeat for other 3 wheels.

2.



Insert the 1-1/2" cap on each end of the 2 support bases.

3.



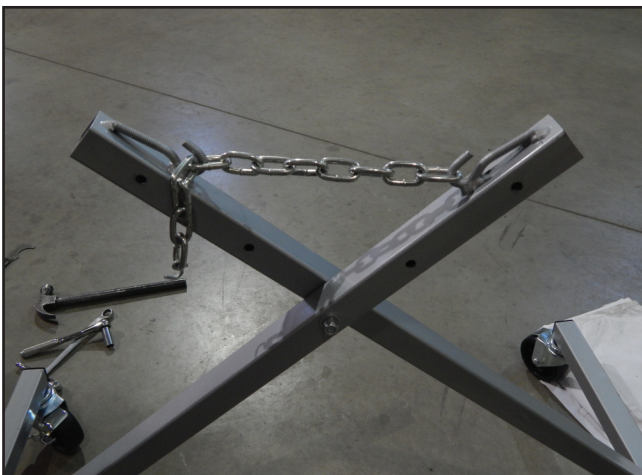
Insert the bolt into the bottom hole on one of the support bases.

4.



Insert the bolt into the bottom hole of the other support base, and tighten the nut onto the bolt.

5.



Attach the chain onto the hooks of each support base.

6.



Insert the extension bar into the support base. Line up the holes and insert the pin. Place the 1" caps on either end of the bar. Repeat with the other extension bar.

7.



The Champ Rolling Panel Stand is now ready to be used.

Place the foam pads onto the extension bars.

